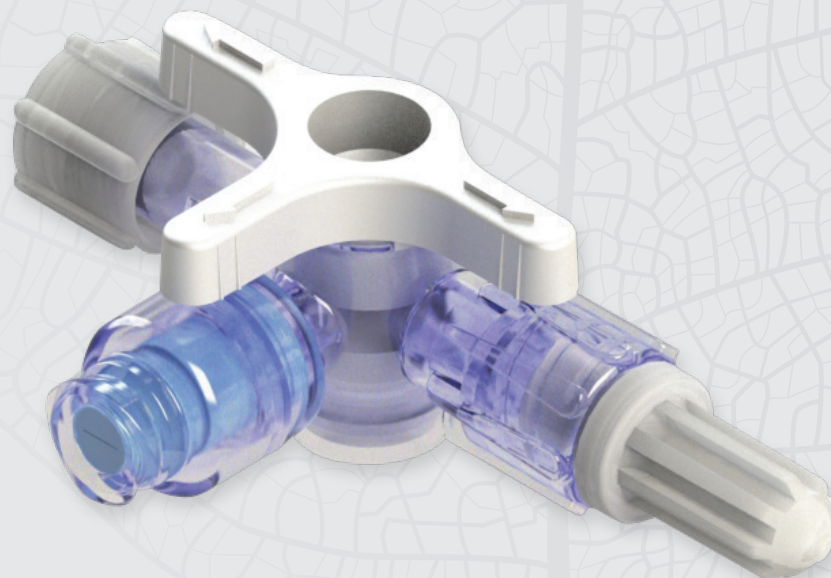


Marvelous™ Stopcock (MRVLS)

A closed-swabbable stopcock with a proprietary flow channel feature specifically designed for IV administration and pressure monitoring applications, assuring minimal residual volume.

The Marvelous™ allows your customers to automatically flush drugs and blood residuals, without the need to expose the system to the open air, with minimal manual steps, and with maximal compliance to best practices.

Elcam's Marvelous™ is part of our E-Safe™ product family, specially developed in order to provide our customers with a range of solutions to minimize stopcock contaminations and enhancing patient safety.



Elcam Medical's Marvelous™ stopcock - an excellent choice for both monitoring and IV procedures.



Patient
Monitoring



IV Therapy
& Anesthesia

[Elcam Devices](#) [Elcam Stopcocks](#) [Elcam Components](#)

The Marvelous™ carries many advantages for both IV and Monitoring applications:

Safety

- **Reduced bacterial and air ingress** - maintains a closed system at all times
- **Reduced dead space** - assures flushing with minimal residual volume. Whether a drug or blood, the internal volume is constantly flushed by the in-line flow providing greater protection against blood clotting and bacterial colonization.

Efficient pressure monitoring

- **Allows priming in a closed system**
- **Assures pressure monitoring without signal damping**

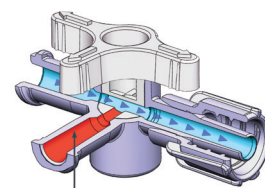
Facilitated blood sampling

- Enables blood sampling with the benefits of a **closed system** and **on-line flushing** with **minimal residual volume**

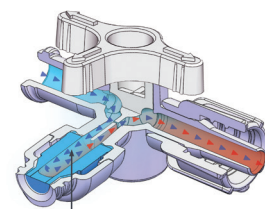
Ease of use

- **Saving your customer time and money** - simply swab and use! No need for using cannulas, needles or caps.
- **Shortens flushing time** – no need to flush the side port
- **Universal** - the Marvelous's ports are compatible with all common used luers

Property	Units	Marvelous for monitoring applications ¹ (standard flow)	Marvelous for IV applications ¹ (high flow)
Flow ² rate at "All open" position	[ml/min]	140±5	200±5
Flow ² rate while side port closed	[ml/min]	70±5	105±5
Flow ² rate from side port to male Luer	[ml/min]	135±5	175±5
Side port volume	[ml]	0.2±0.02	0.2±0.02



Trapped fluid or air in side port



Constant flushing of the side port

¹ For acceptable quality levels refer to spec # 0022-G

² Flow was measured under 75 mmHg pressure / 1 meter water pressure

Physical Properties

- Lipid Resistant
- Latex Free
- Non-hemolytic

Configuration options

- 1 Valve or 2 valves
- Handles: One arm or 3 arm
- Different Handle colors
- High Flow or Standard Flow
- With or without Luer Lock
- Manifold

The Marvelous™ is
CE approved for
non-sterile products
and 510(k) cleared



www.elcam-medical.com

Head Office / Manufacturer
Elcam Medical

BarAm 1386000,
Israel
Tel: 972 4 698 8120/1
Fax: 972 4 698 0777
sales@elcam.co.il

USA
Elcam Medical Inc.

2 University Plaza, Suite 620
Hackensack, NJ 07601
Tel: +1 201 4571120
Fax: +1 201 4571125
info@elcam-medical.com

Europe
Elcam Medical Europe

Via Emilia Romagna 15,
41012 Carpi (Modena) Italy
Tel: +39 059 697710
Fax: +39 059 697705
sales.eu@elcam-medical.com

China
Elcam China Office

Room 3309, Jinhai Mansion
No. 89 of Anshun Road,
Shanghai, PRC. Zip: 200051
Tel: +86 21 62829967
Fax: +86 21 62829967
johnliu02@126.com