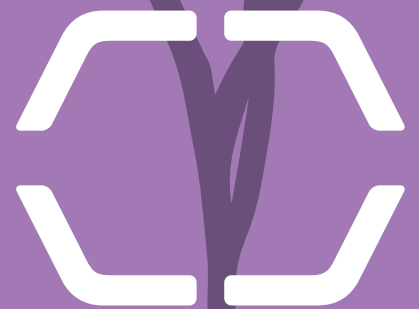




Your source of consistent quality and care



 **Elcam Stopcocks**

 **Elcam
MEDICAL**
Where everything connects

Elcam Stopcocks

As a professional in the area of medical devices, you know that when searching for a stopcock, you need to source it from the industry's experts. That is because you are looking for a defect-free stopcock that will work in the same flawless manner every time.

You probably need both standard and customizable stopcocks that will fit a variety of applications. Elcam Medical, the world leader in OEM stopcocks and manifolds is able to offer you the widest range of disposable medical devices for fluid control for all related applications.

Our stopcocks can be customized according to yours and your customers' needs and specifications. Our products are delivered with the unique Elcam customer experience that guarantees end to end service and a warm human touch.

Standard stopcock

Standard Pressure, Standard Flow Path

Elcam Medical produces a wide range of stopcocks that meet the demands of the hemodynamic pressure monitoring, IV therapy including highflow systems, angioplasty, anesthesia and other medical applications.



High Flow stopcock

High Flow Path Ways

Designed mainly to provide higher flow rates or viscous fluid applications where required.

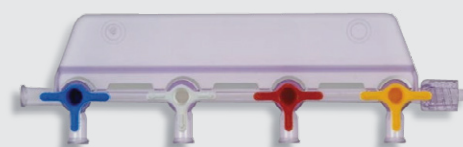
Major applications are within rapid infusion, anesthesia and blood related procedures.



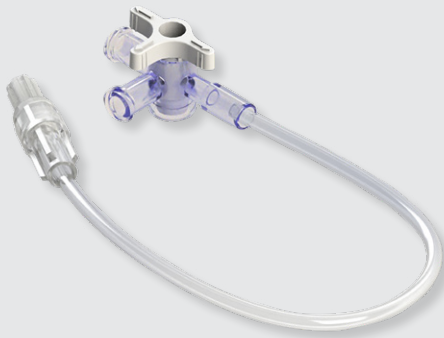
Manifolds

Monoblock Design

We produce a wide range of manifolds that meet the demands of IV therapy including highflow systems, anesthesia, and hemodynamic pressure monitoring. Elcam's Manifolds are available in 2, 3, 4 and 5 gang models in a variety of handle colors according to your needs. The right port can be female or male with a luer lock nut.

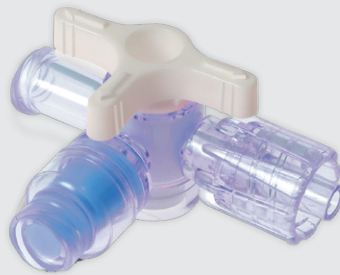






Stopcock with tube assembly

Elcam Medical offers its expertise in supplying stopcocks as cost effective sub-assemblies. Offering the widest variety of tube fitments for bonding, or oversizing, off the shelf or tailor made. Elcam offers its professional support in building and tweaking your bonding process.



Closed Swabbable Stopcock

A Closed Stopcock, integrated with a Swabbable Luer Activated Valve, allowing for maintenance of a fully closed system through the entire use duration, as well as eliminating needle stick injuries when using a stopcock.



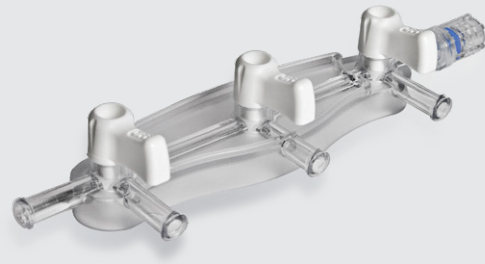
Marvelous™ (MRVLS)

Named after the abbreviation - Minimal Residual Volume Luer Activated Swabbable Stopcock, it is a closed stopcock with a proprietary flow channel feature. The Marvelous™ allows your customers to automatically flush drugs and blood residuals, without the need to expose the system to the open air, and assuring minimal residual volume.





High Pressure Stopcock

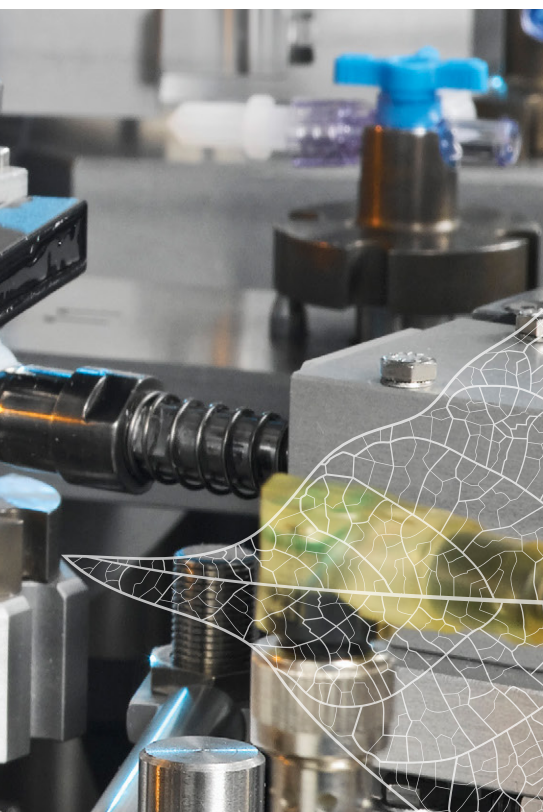


High Pressure Manifold

High & Medium Pressure Stopcocks and Manifolds

Withstand 500 to 1200 psi

Elcam Medical's High & Medium Pressure Stopcocks and Manifolds are suitable for CathLab and other interventional applications and are designed to withstand 500 to 1200 psi pressure. Our products are available in a variety of configurations with rotating High Pressure adapters or a standard swivel luer lock nut. Available with Elcam's unique ergonomic easy-to-use High Pressure handles.



Our special features:

Elcam's Stopcocks and Manifolds are designed for worldwide markets and meet all relevant industry standards.

Elcam's Stopcocks and Manifolds are available in 1, 2, 3, 4 way configurations with various handle styles to match different required applications.

Products can be supplied in materials suitable for EtO, Gamma and E-Beam irradiation and/or lipid based admixtures upon request.

Customization

Our Products can be customized according to your needs. Elcam offers its expertise, state of the art equipment and production capacity for custom made products for you. Our team will listen to your specific request and together with the experience of our R&D team we will be able to recommend and create a unique product to best meet your customer's needs.

Body material

Polycarbonate - Elcam can provide its stopcocks in a wide range of grades of this high performance material. Such variety of grades, specifically selected to tailor our products to your different needs and applications, whether it is an EtO or gamma sterilization compatibility or solvent bonding durability.

Polysulfone - A body material providing superiority in resistance to lipid solutions. EtO and gamma sterilization compatible.

Tritan™ - Body material with increased durability to lipids, disinfectants and aggressive drugs, compatible with both gamma and EtO sterilization. Tritan is also BPA free.

Lipid resistance

Elcam's standard stopcocks and Manifolds when made of some of our high resistance Polycarbonate grades, Polysulfone and Tritan are also compatible with aggressive solutions such as Lipid and Chemotherapeutics.*

* It is recommended that the maximum use duration will not exceed 24 hours.



Number of Ways

- **1 way** - Stopcock with two ports, "closed" or "open" position only.
- **2 way** - Stopcock with 3 ports and 2 positions. This Stopcock handle rotates 90°.
- **3 way** - Stopcock with 3 ports, and a handle with 180° rotation. Not allowing an "all open position".
- **4 way** - Stopcock with 3 ports, single arm or T handle, with 360° rotation, allowing all flow possibilities.

Handle types

- **T handle** - 3 Arm handle, used with both standard and large bore products. A T handle is used only with 4 way stopcocks.
- **Long arm handle** (1 Arm handle) - can be used with 2,3 and 4 way stopcocks. The handle can be supplied in a low or high profile design.
- **2 Arm handle** - used with 1 way stopcocks, available in both high and low profile.
- **Handle colors** - Blue, Green, Yellow, Red, Surgical blue, White, Natural, Orange, Pink, Salmon. Subject to stopcock configuration.

Tube fitment & bonding

Widest variety of tube fitments for bonding, or oversizing, off the shelf and tailor made. Elcam offers its professional support in building and tweaking your bonding process.

Luer Lock

- **Long Nut** - A lock nut rotating around the Stopcock male collar without any back and forth movement.
- **Short Nut** - A lock nut rotating around the male collar but also sliding back and forth on the male collar.
- **Luer Slip** - A Stopcock having no lock nut mechanism on its male port. Usually used to bond tubes on the male port.
- **3 female** - Stopcock having 3 female ports and no male port.
- **Safe2 Rotator™** male Luer lock connector - a spinning lock feature minimizing disconnections and associated risks



Accessories

Colored Buttons - Stopcocks can be supplied with color coding buttons inserted in the handle. Colored buttons can also be supplied in bulk.

Protectors for Female Ports - Perfectly designed to cover or seal the female ports of all our products. Available in 2 models: extended and recessed.

Vented vs. Sealed - The protectors are available in vented or non-vented (sealed) configurations. Vented protectors are used to enable EtO sterilization.

**Head Office / Manufacturer
Elcam Medical**

BarAm 1386000,
Israel
Tel: 972 4 698 8120/1
Fax: 972 4 698 0777
sales@elcam.co.il

**USA
Elcam Medical Inc.**

1 University Plaza, Ste. 511
Hackensack, NJ 07601
Tel: +1 201 4571120
Fax: +1 201 4571125
info@elcam-medical.com

**Europe
Elcam Medical Europe**

Via Emilia Romagna 15,
41012 Carpi (Modena) Italy
Tel: +39 059 697710
Fax: +39 059 697705
sales.eu@elcam-medical.com

**China
Elcam China Office**

Room 3309, Jinhai Mansion
No. 89 of Anshun Road,
Shanghai, PRC. Zip: 200051
Tel: +86 21 62829967
Fax: +86 21 62829967
johnliu02@126.com



Elcam Devices

Elcam Stopcocks

Elcam Accessories