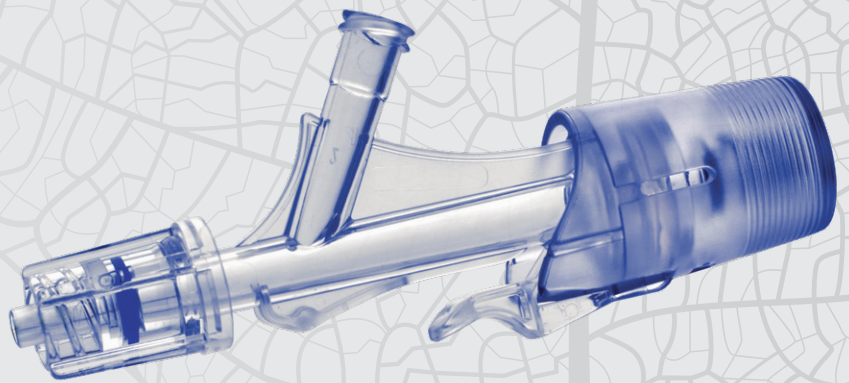


# Y-Click

Y- connector for PTCA applications

Elcam Medical's Y-Click, is an easy-to-use hemostatic device suitable for both diagnostic and interventional procedures.



Interventional  
Cardiology & Radiology



 Elcam Devices    Elcam Stopcocks    Elcam Accessories

## The Y-Click was developed in close collaboration with interventional experts, providing intuitive operation, ease of use and minimal blood loss which are essential during interventional procedures.

The ergonomically designed Y-Click provides easy maneuvering and significantly reduced blood loss during the introduction, use and withdrawal of diagnostic and interventional devices used in angioplasty procedures: guide wires, guide catheters, balloons and stents.

This is achieved by using a unique three stage - lever operable - valve: open, semi-open and closed positions.

### Unique advantages

- Prevents back bleeding in Closed position and minimizes back bleeding in Semi-Open position
- Prevents air ingress into the device when the valve is in the Semi- Open and Closed positions
- One - handed operation
- Audio indication - "Clicks" notify switching between the positions
- Good signal keeping in both Closed and Semi-Open positions
- Self-closing safety mechanism - When applying high pressure at the side port (injection of contrast media), the Y-Click will automatically move from Semi-open to Closed position

### Product Specifications

- Can be used with automatic contrast media injectors employing a flow rate of up to 15cc per second and setting pressure of up to 600 psi
- Suitable for angiography devices with 9 Fr or smaller guide catheters
- Compatible with 0.014" – 0.038" diameter guide wires

### Quality System

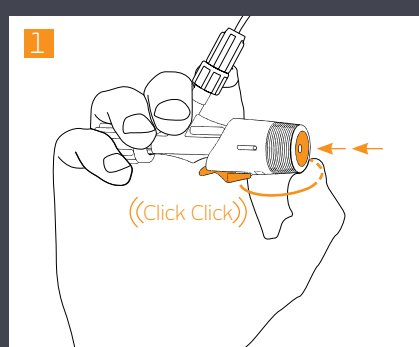
Elcam's highly automated processes ensure production of consistently high quality products.

We operate in strict compliance with the international quality standards.

All "Y-Click" components meet the Biocompatibility requirements according to ISO 10993-1 under 'blood contact, indirect, limited contact duration'.

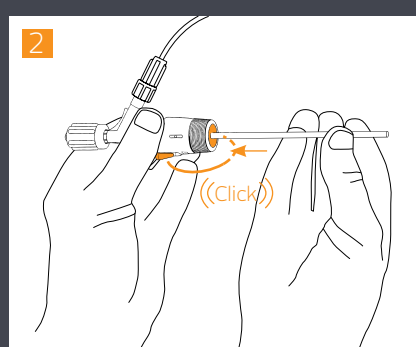
### Regulatory Status:

510(k) Cleared (#K060759)



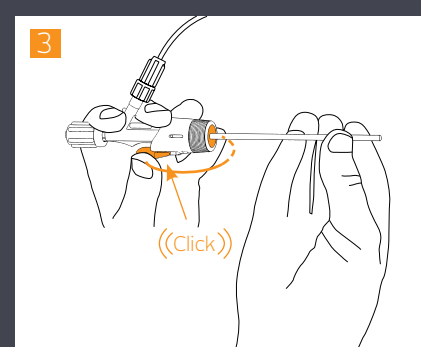
#### Open position

2 clicks of the valve inwards.  
For insertion of catheters/guide wires and insertion needles.



#### Semi-Open position

1 click of the valve inwards.  
For manipulating the catheter with minimal blood loss and minimal friction.



#### Closed position

Press lever – valve returns to closed position. For maneuverability of guide wires and small diameter catheters and for high pressure injection of contrast media.



[www.elcam-medical.com](http://www.elcam-medical.com)

Head Office / Manufacturer  
Elcam Medical

BarAm 1386000,  
Israel  
Tel: 972 4 698 8120/1  
Fax: 972 4 698 0777  
sales@elcam.co.il

USA  
Elcam Medical Inc.

1 University Plaza, Ste. 511  
Hackensack, NJ 07601  
Tel: +1 201 4571120  
Fax: +1 201 4571125  
info@elcam-medical.com

Europe  
Elcam Medical Europe

Via Emilia Romagna 15,  
41012 Carpi (Modena) Italy  
Tel: +39 059 697710  
Fax: +39 059 697705  
sales.eu@elcam-medical.com

China  
Elcam China Office

Room 3309, Jinhai Mansion  
No. 89 of Anshun Road,  
Shanghai, PRC. Zip: 200051  
Tel: +86 21 62829967  
Fax: +86 21 62829967  
johnliu02@126.com